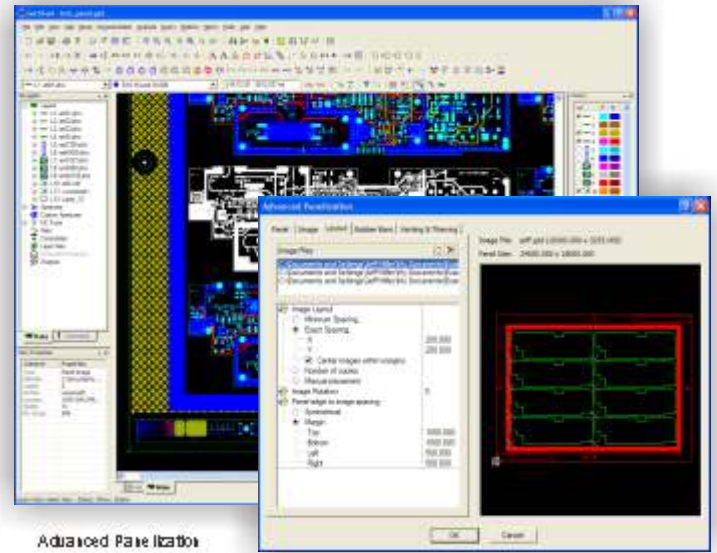


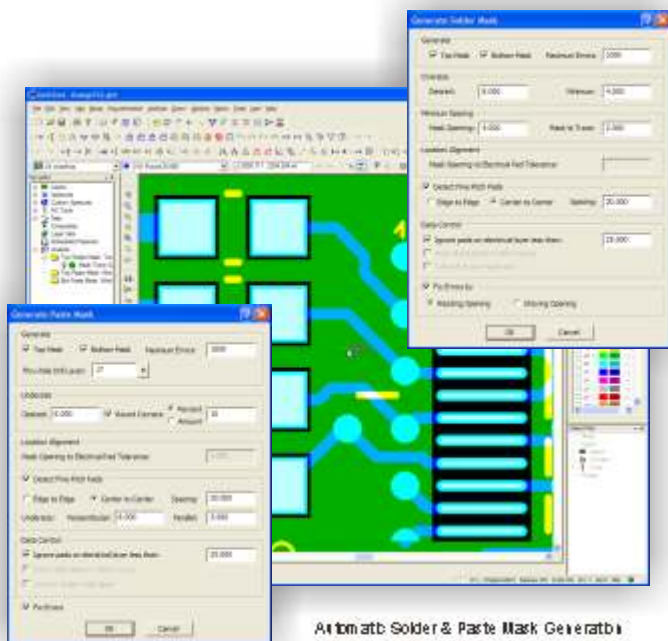
In an era of downsizing, consolidation, and outsourcing, the CAM system you choose is more important than ever. The last things you need in your design flow are revision spins, cost over-runs, and reductions in your product's time-to-market due to manufacturing issues. Purchase price is only a part of the ROI equation. Implementation costs in both time and manpower, not to mention ongoing maintenance costs, can keep ROI at arm's length indefinitely.

The solution is: *GerbTool*. Don't be fooled by the name; *GerbTool* is not just a Gerber viewer. It is a full-featured, CAM software solution, capable of handling the toughest jobs for a lot less money than the competition. Below are just a few of the features you can expect to find within *GerbTool*.



Feature Highlights:

- ✓ Import Wizard that loads ALL industry formats (Gerber, Drill, Mill, HPGL, DXF, and more...).
- ✓ Intelligent Data Transfer with ODB++, ODB++ (X), and IPC-2581 included in select bundles.
- ✓ Database Navigator provides quick and easy access to all necessary information without the need for menus or toolbars.
- ✓ IPC-D-356/A Netlist information can be displayed graphically and aligned like other layers.
- ✓ HyperNETLIST Extraction can generate netlist information for even the largest of designs in a matter of minutes.
- ✓ Dynamic DfM Analysis Suite provides 75+ checks that cover Design Information, Design Rules Checks, Manufacturing Rules Checks, Design for Fabrication, and Embedded Passives (optional). Dynamic *checklist* environment allows for *single-pass* analysis of an entire design.
- ✓ True graphical Netlist Comparison. HyperNETLIST Comparison includes Pin-Point Error feature to quickly locate your Shorts and Opens.
- ✓ Advanced Panelization (optional) makes quick work of even the toughest tooling processes. Step *multiple* designs with ease. Powerful Venting, Thieving, and Robber Bars are included.



GerbTool can provide you with fast ROI by helping to eliminate those costly revision spins, improve your time-to-market, and increase your overall design quality before your data has even left your hands. Come and take a closer look at the many features that *GerbTool* has to offer, and see how it can refine your Design and Manufacturing process flow today. Contact a sales representative and they will guide you in selecting the appropriate *GerbTool* bundle to suit your needs and budget.

For more details, and to download a trial license that can demonstrate GerbTool's effectiveness on your own data, visit the *GerbTool* Web site today at <http://www.gerbtool.com>.

© 2006 WISE Software Solutions, Inc. All rights reserved. Trademarks are the property of their respective owners.

