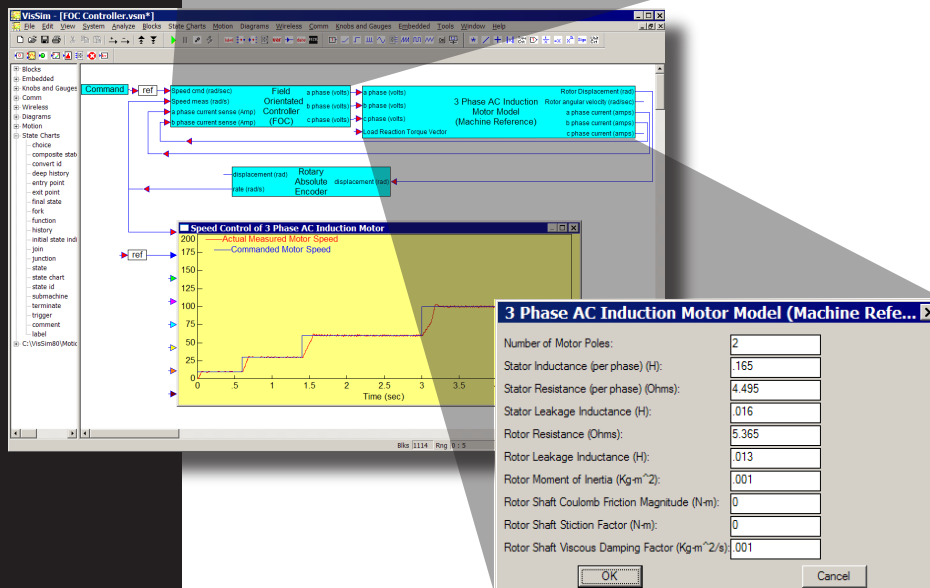
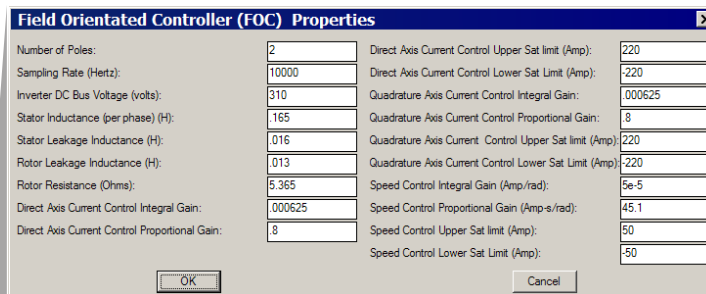


VisSim/Motion consists of over 40 customizable blocks (see Block Set). These blocks are implemented in floating point, making them ideal for simulating a motor and controller in VisSim before downloading the code to an embedded target.



VisSim model that simulates Field Oriented Motor Control (FOC) of an AC induction motor using the VisSim/Motion block set. Interactive dialog boxes let you configure FOC (top) and 3-Phase AC induction motor (bottom) parameters.

## BLOCK SET

- Amplifiers: PWM Brush (2-Quad, 4-Quad, 2-Quad WCF, 4-Quad WCF; PWM Brush & Brushless Servo
- Controllers: AC Induction Motor Current Model (FOC), Commutator (Six Step), Microstep, PID (Digital & Ideal), Field Orientated, PWM (Dual Phase, Single Phase, Space Vector), Stepper Motor
- Filters: Low Pass, Rate Estimation (Rooftop)
- Loads: Rotational, Translational
- Motors: AC Induction (DQ, Machine Reference), Basic DC (Permanent Magnet), Brushless DC (PLDC/PMSM), Permanent Magnet Stepper (2 Phase)
- Sensors: Frequency Demodulator, Hall Sensor, Linear Encoder, LVDT, Rotary Encoder, Rotary Position Sensor, Rotary Servo Potentiometer, Rotary Tachometer
- Sources: 3-Phase AC, 3-Phase Square Wave Inverter, Triangle Wave Generator
- Tools: Discrete Integrator
- Transforms: Clarke, Inverse Clark, Park, Inverse Park, Park Stationary

## System Requirements

- Professional VisSim 8.0
- Windows XP, Vista, or 7
- 128 MB RAM
- 125 MB hard disk space

## About Visual Solutions

Visual Solutions is a pioneer in the development of world-class software for modeling and simulating complex dynamic systems and for Model-Based Design of embedded systems.

VisSim is a visual environment for developing system models and performing dynamic simulations. Its unparalleled power, ease of use, and reliability has made it an essential tool on thousands of engineering projects spanning a diverse range of industries and disciplines, including motion control, closed-loop control, automotive, HVAC, aerospace, medical devices, and embedded controls development.

Since its founding in 1989, Visual Solutions has maintained a strong connection with the academic community. Visual Solutions software products have been incorporated into the curricula and research laboratories at thousands of universities and colleges. It has enhanced and improved teaching methods, learning skills, and research strategies.



Contact us now for more information on the  
VisSim product line.

Phone: 1-800-VISSIM-1

Email: [sales@vissol.com](mailto:sales@vissol.com)

[www.vissim.com](http://www.vissim.com)

Distribuito da:

**PATRUCCO snc**  
Via Clemente, 12  
10143 TORINO  
Tel. 011-4375549  
Fax 011-4375986  
[info@patrucco.it](mailto:info@patrucco.it)  
[www.patrucco.it](http://www.patrucco.it)

**Visual Solutions**  
INCORPORATED

Modeling The Future